

LTB00668V7

# TECHNICAL BULLETIN

06 OCT 2020



© Jaguar Land Rover Limited

All rights reserved.

---

## SECTION:

310-00

---

## SUBJECT/CONCERN:

Fuel Tank 'Slosh' 'Slap' Noise

---

## MARKETS:

ASIA PACIFIC; CHINA; EUROPE; JAPAN; KOREA; MENA; OVERSEAS

---

## CONDITION SUMMARY:

**SITUATION:**

A customer may express a concern of a 'sloshing' or 'slapping' noise from the rear of the vehicle when braking and accelerating at low speeds. The noise is most prominent when the fuel level is just below full.

**This technical bulletin has been updated due to changes to the affected vehicle range, parts section, warranty section and the service instructions.**

**CAUSE:**

No internal baffles installed in the fuel tank.

**Suggested customer concern code - MB6**

**ACTION:**

Follow the instructions below.

**PARTS :**

PART NUMBER	DESCRIPTION	QUANTITY
LR065678	Fuel tank baffle kit	1
LR000966	Fuel pump module O-ring seal	1
TYG500130	Rear driveshaft - Front flange bolts	4
TYP500180	Rear driveshaft - Rear flange bolts (if installed)	6
LR092696	Rear driveshaft - Rear flange bolts (if installed)	6
LR036441	TDV6 3.0L Diesel - Gen 1 and Hybrid Electric Vehicle (HEV) - Exhaust Clamp	1
LR077709	TDV6 3.0L Diesel - Gen 2 - Exhaust clamp	1

PART NUMBER	DESCRIPTION	QUANTITY
LR036438	TDV8 4.4L Diesel - Exhaust clamp	2
LR077709	Ingenium I4 2.0L Diesel - Exhaust clamp	1
LR085942	Ingenium I4 2.0L Diesel - Exhaust gasket	1

## WARRANTY:

### NOTES:

- Repair procedures are under constant review, and therefore times are subject to change; those quoted here must be taken as guidance only. Use TOPIx to obtain the latest repair time.
- The JLR claims submission system requires the use of causal part numbers. Labor only claims must show the causal part number with a quantity of zero.

DESCRIPTION	SRO	TIME (HOURS)	CONDITION CODE	CAUSAL PART
Range Rover Sport - Installation of foam baffles into fuel tank - INGENIUM I4 2.0L Diesel	19.55.89.57	5.0	42	LR044702
Range Rover Sport - Installation of foam baffles into fuel tank - TDV6 3.0 Diesel - With Diesel Particulate Filter (DPF) - Without Diesel Exhaust Fluid (DEF)	19.55.89.57	3.8	42	LR044702
Range Rover Sport - Installation of foam baffles into fuel tank - TDV6 3.0 Diesel - With <u>DPF</u> - With <u>DEF</u>	19.55.89.57	4.5	42	LR044702
Range Rover Sport - Installation of foam baffles into fuel tank - TDV6 3.0 Diesel - Without <u>DPF</u>	19.55.89.57	3.6	42	LR044702

DESCRIPTION	SRO	TIME (HOURS)	CONDITION CODE	CAUSAL PART
Range Rover Sport - Installation of foam baffles into fuel tank - SDV6 3.0 Diesel Hybrid Electric Vehicle (HEV) - Without <u>DPF</u>	19.55.89.57	3.8	42	LR044702
Range Rover Sport - Installation of foam baffles into fuel tank - SDV6 3.0 Diesel <u>HEV</u> - With <u>DPF</u>	19.55.89.57	4.0	42	LR044702
Range Rover Sport - Installation of foam baffles into fuel tank - TDV8 4.4 Diesel - With <u>DPF</u> - With <u>DEF</u>	19.55.89.57	6.0	42	LR044702
Range Rover - Installation of foam baffles into fuel tank - TDV6 3.0 Diesel - With <u>DPF</u> - With <u>DEF</u>	19.55.89.57	5.0	42	LR044702
Range Rover - Installation of foam baffles into fuel tank - SDV6 3.0 Diesel <u>HEV</u> - With <u>DPF</u> - With <u>DEF</u>	19.55.89.57	3.9	42	LR044702
Range Rover - Installation of foam baffles into fuel tank - SDV6 3.0 Diesel <u>HEV</u> - With <u>DPF</u> - Without <u>DEF</u>	19.55.89.57	3.5	42	LR044702
Range Rover - Installation of foam baffles into fuel tank - SDV6 3.0 Diesel <u>HEV</u> - Without <u>DPF</u>	19.55.89.57	3.5	42	LR044702
Range Rover - Installation of foam baffles into fuel tank - TDV8 4.4 Diesel - With <u>DPF</u> - With <u>DEF</u>	19.55.89.57	6.3	42	LR044702
Range Rover - Installation of foam baffles into fuel tank - TDV6 3.0 Diesel - Without <u>DPF</u>	19.55.89.57	3.6	42	LR044702
Range Rover - Installation of foam baffles into fuel tank - TDV6 3.0 Diesel - With <u>DPF</u> - Without <u>DEF</u>	19.55.89.57	3.7	42	LR044702

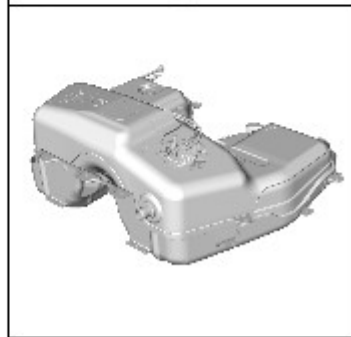
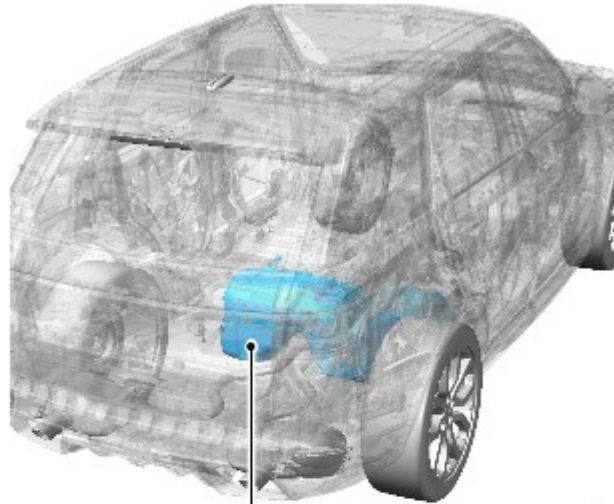
**NOTE:**

Normal Warranty procedures apply.

COMPONENT LOCATION

---

1.



E184780

The illustration shows the location of the fuel tank.

## SERVICE INSTRUCTION:

**NOTES:**

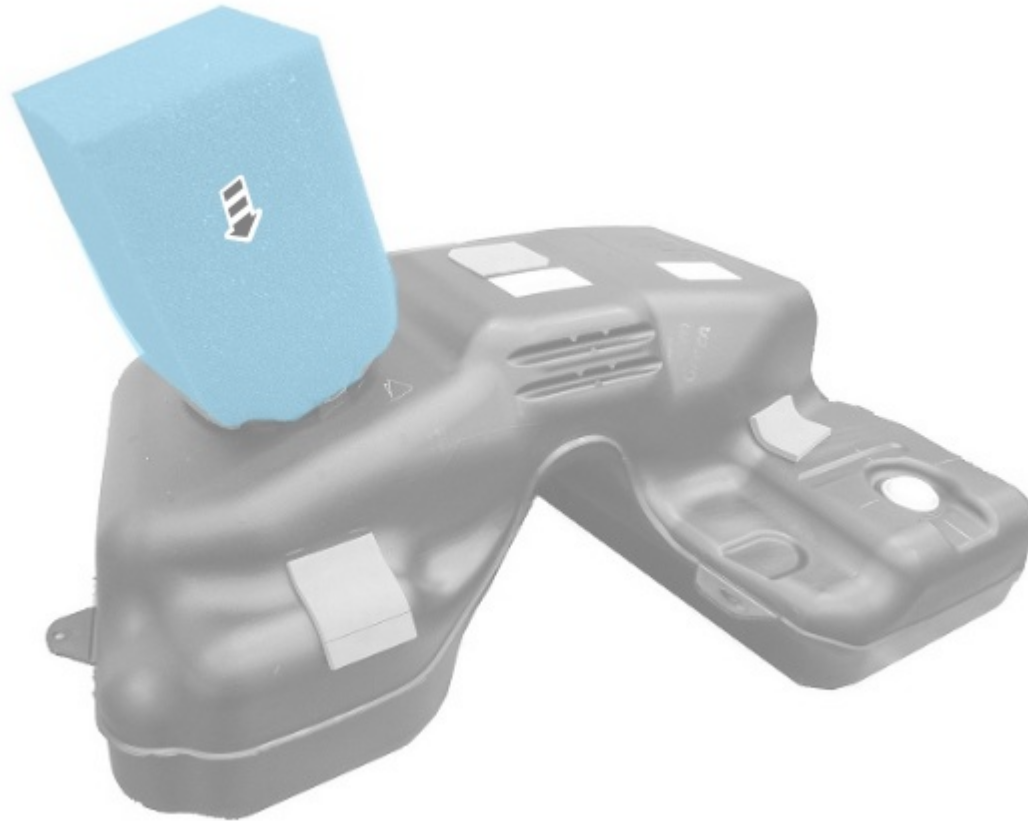
- Vehicles with TDV8 4.4 Diesel engines - This technical bulletin is only applicable to vehicles equipped with DEF and standard wheelbase. For TDV8 4.4 Diesel engines without DEF or long wheelbase refer to technical bulletin LTB00560.
- Range Rover vehicles with TDV6 3.0 Diesel engines, this technical bulletin is only applicable to 2016 model year and onwards vehicles and all HEV. For TDV6 3.0 Diesel Range Rover vehicles up to 2016 model year (non HEV) refer to technical bulletin LTB00560.
- The animation file to view the installation procedure can be found by clicking the icon located adjacent to illustration E165466 (refer to step 2 in the service instruction) or see TOPlx Workshop Manual section: 310-00 - Fuel Tank Baffle Installation.
- Some images in this procedure show the fuel tank with parts of its structure missing, the sections that are cut away are only there to provide extra clarity.

1.

**NOTE:**

All removal steps from the TOPlx reference must be completed before continuing to step 2.

Remove the fuel tank (see TOPlx Workshop Manual section 310-01: Fuel Tank and Lines - Removal and Installation - Fuel tank).

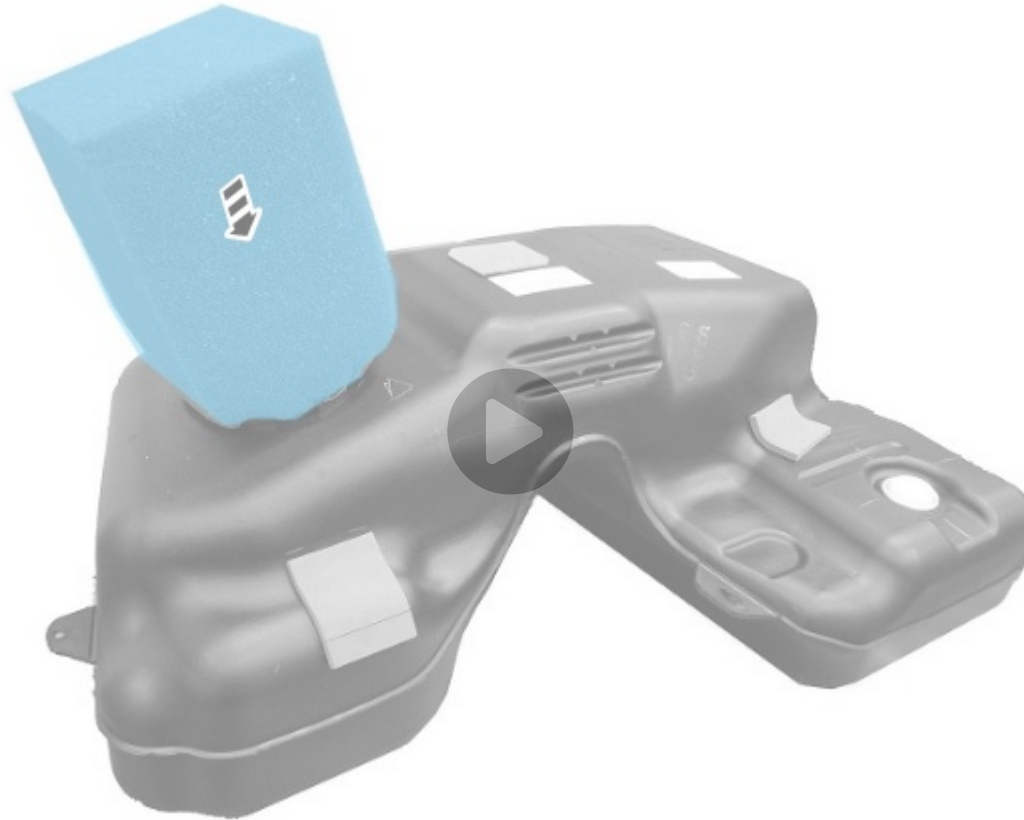


E165466

2.

**CAUTION:**

Make sure the foam baffle is not damaged during this step.

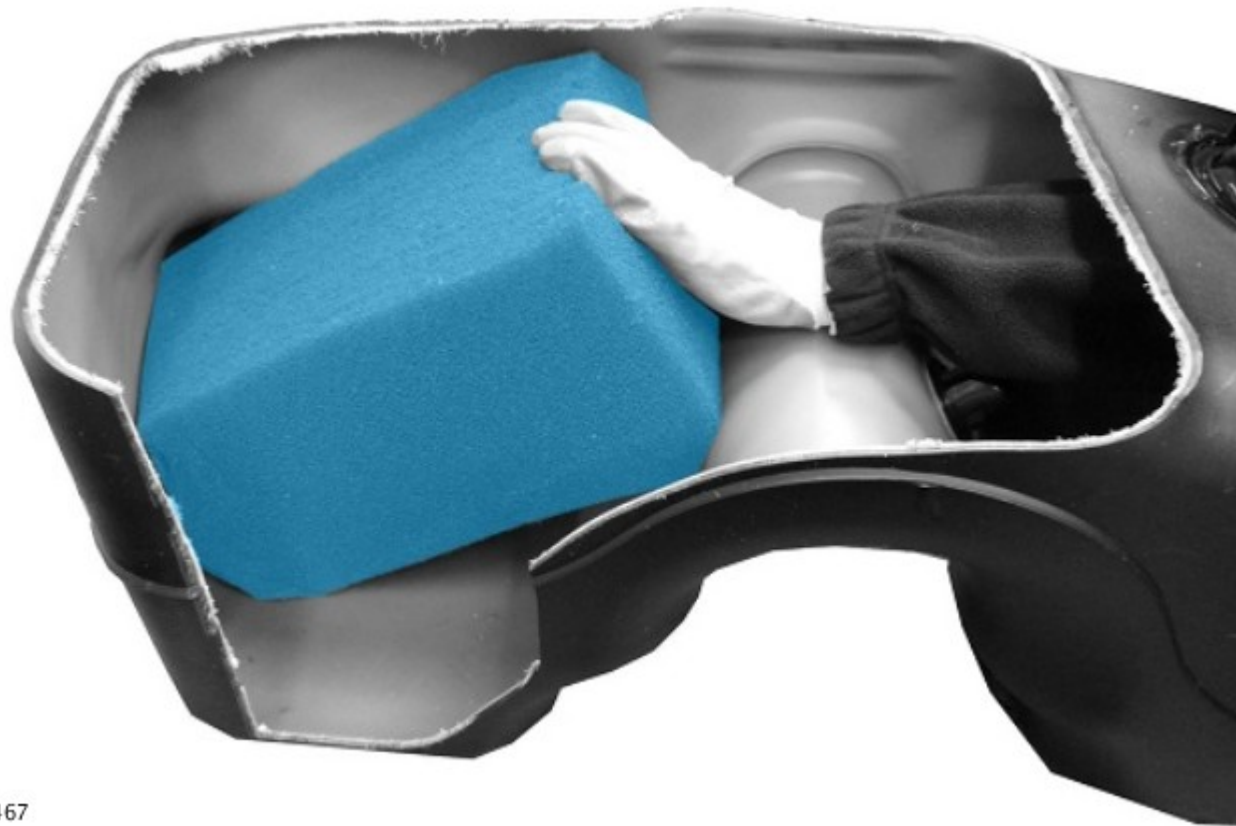


E165466

Install the large foam baffle into the active side of the fuel tank.



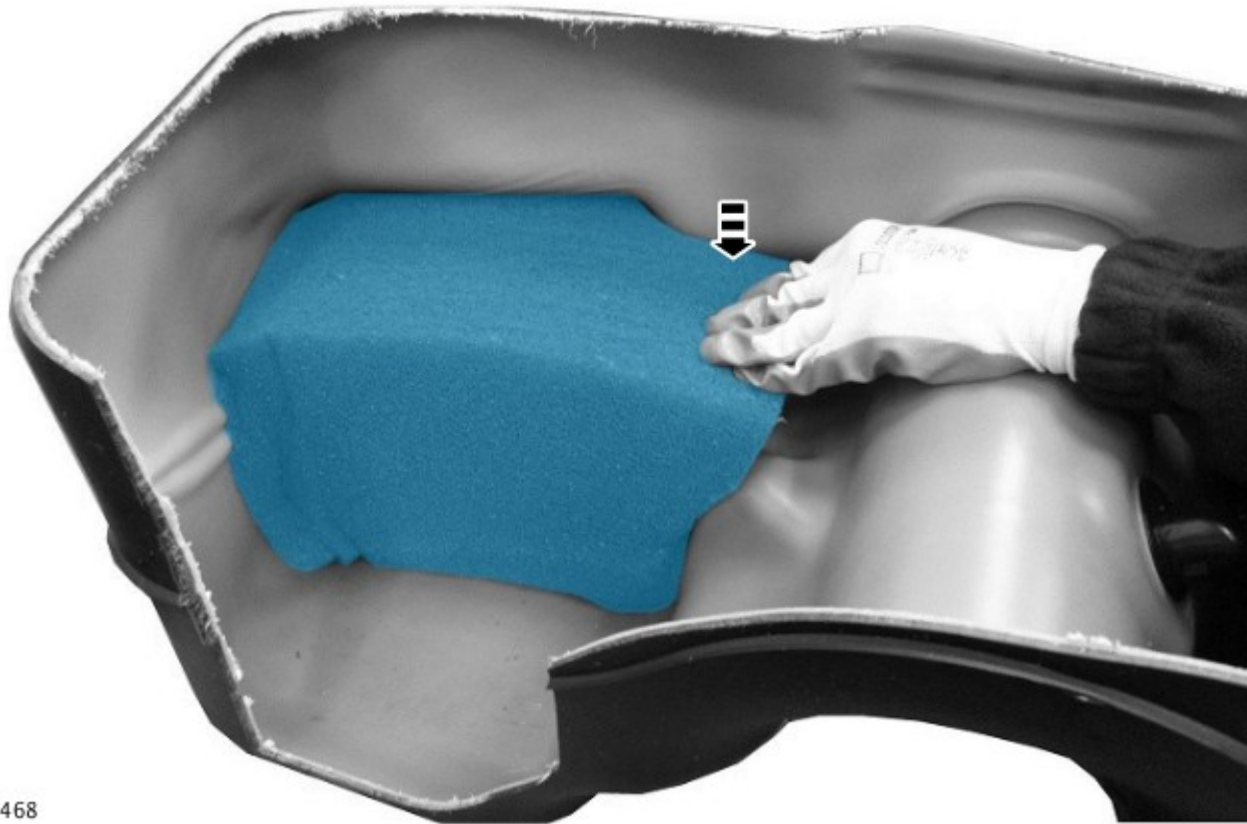
3.



E165467

Position the foam baffle into the passive side of the fuel tank.

4.



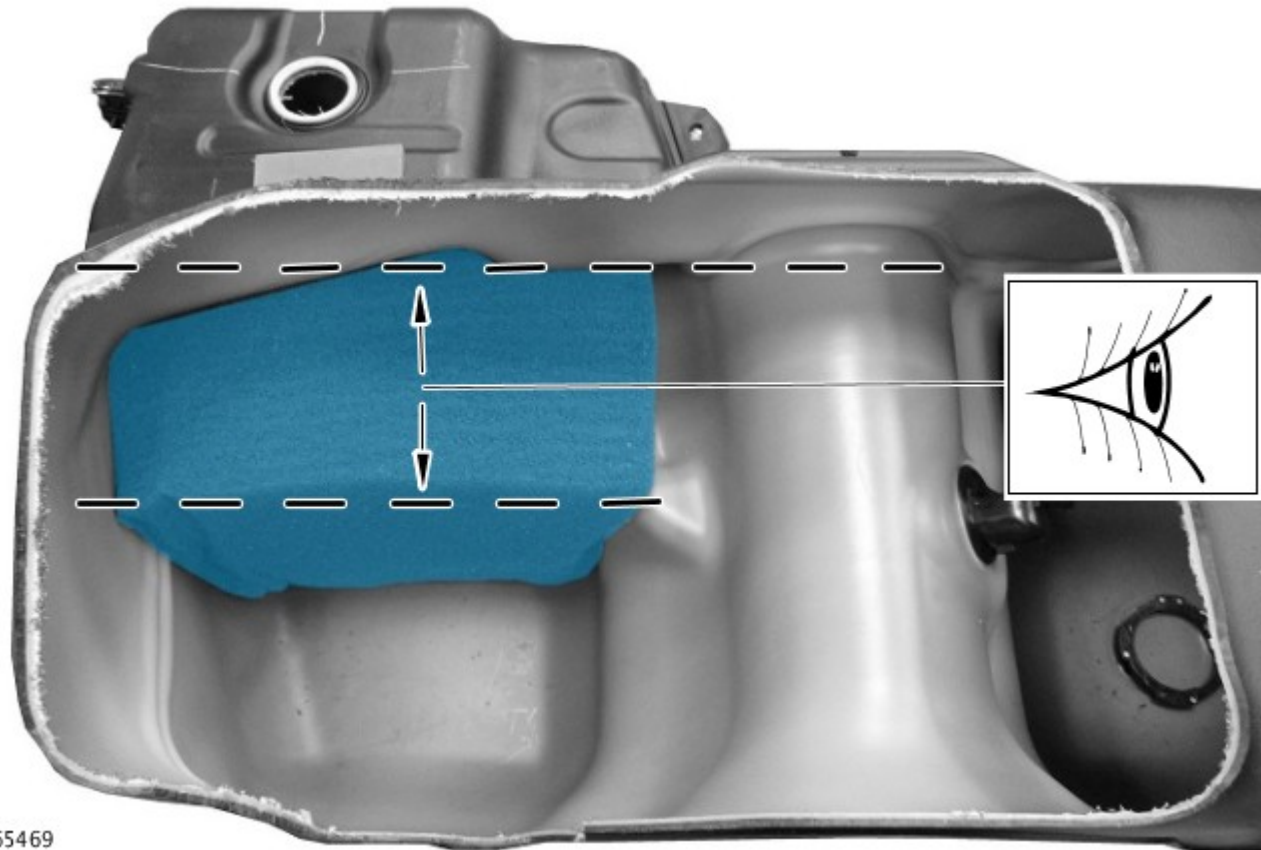
E165468

Make sure the foam baffle is located correctly, as shown in the illustration.

5.

**NOTE:**

It is essential that the foam baffle is parallel to the end of the fuel tank before proceeding with the next step.



Make sure the foam baffle is aligned correctly, as shown in the illustration.

6.



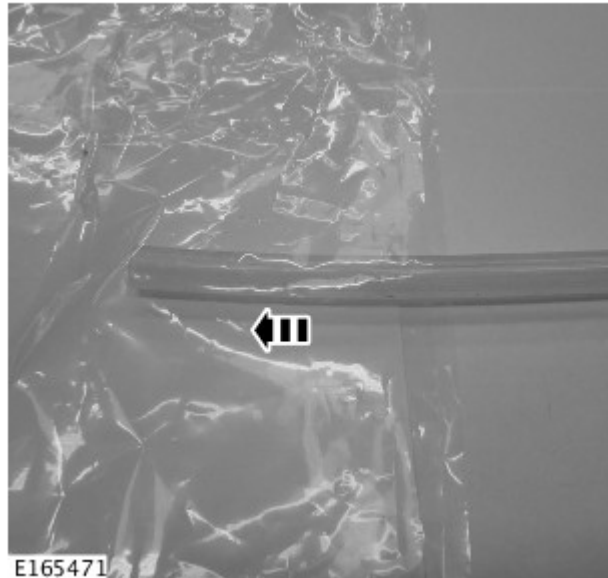
E165470

From the fuel tank baffle kit, connect the hose adapter to the hose end, as shown in the illustration.

7.

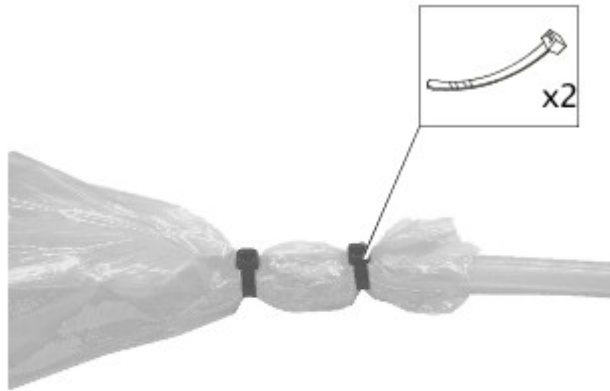
**NOTE:**

A second polythene bag is provided in the fuel tank baffle kit should it be required.



Install the hose inside the polythene bag supplied in the fuel tank baffle kit, as shown in the illustration.

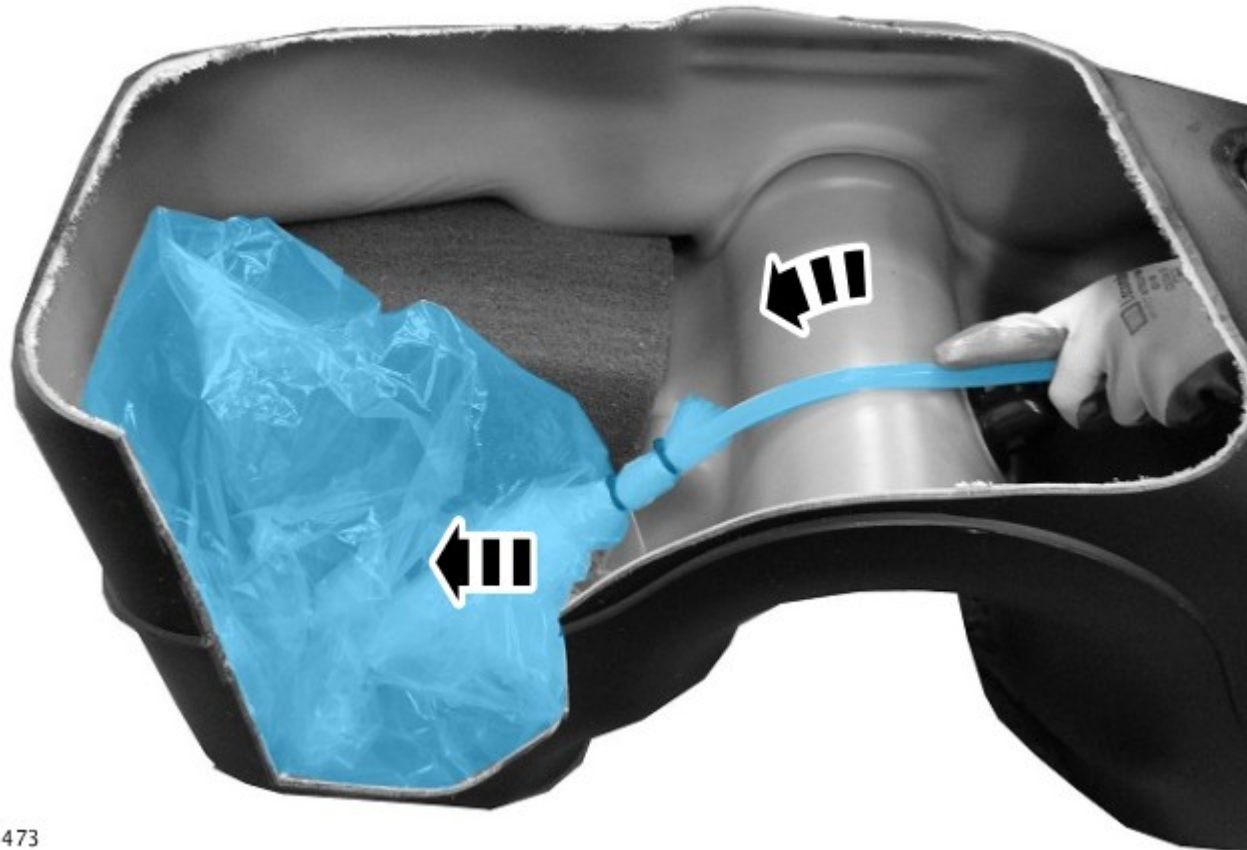
8.



E165472

Secure the polythene bag to the hose using the cable ties from the fuel tank baffle kit, as shown in the illustration.

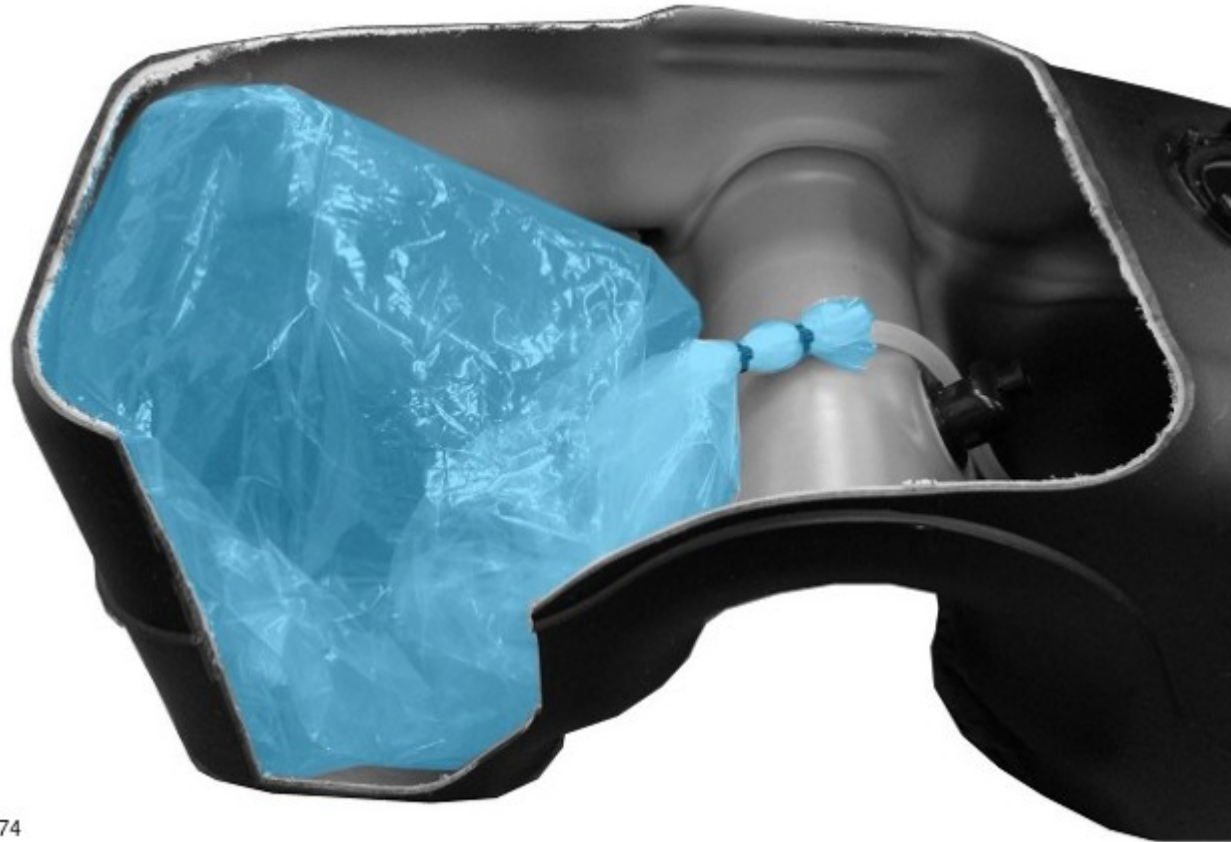
9.



E165473

Install the polythene bag and hose assembly into the passive side of the fuel tank.

10.

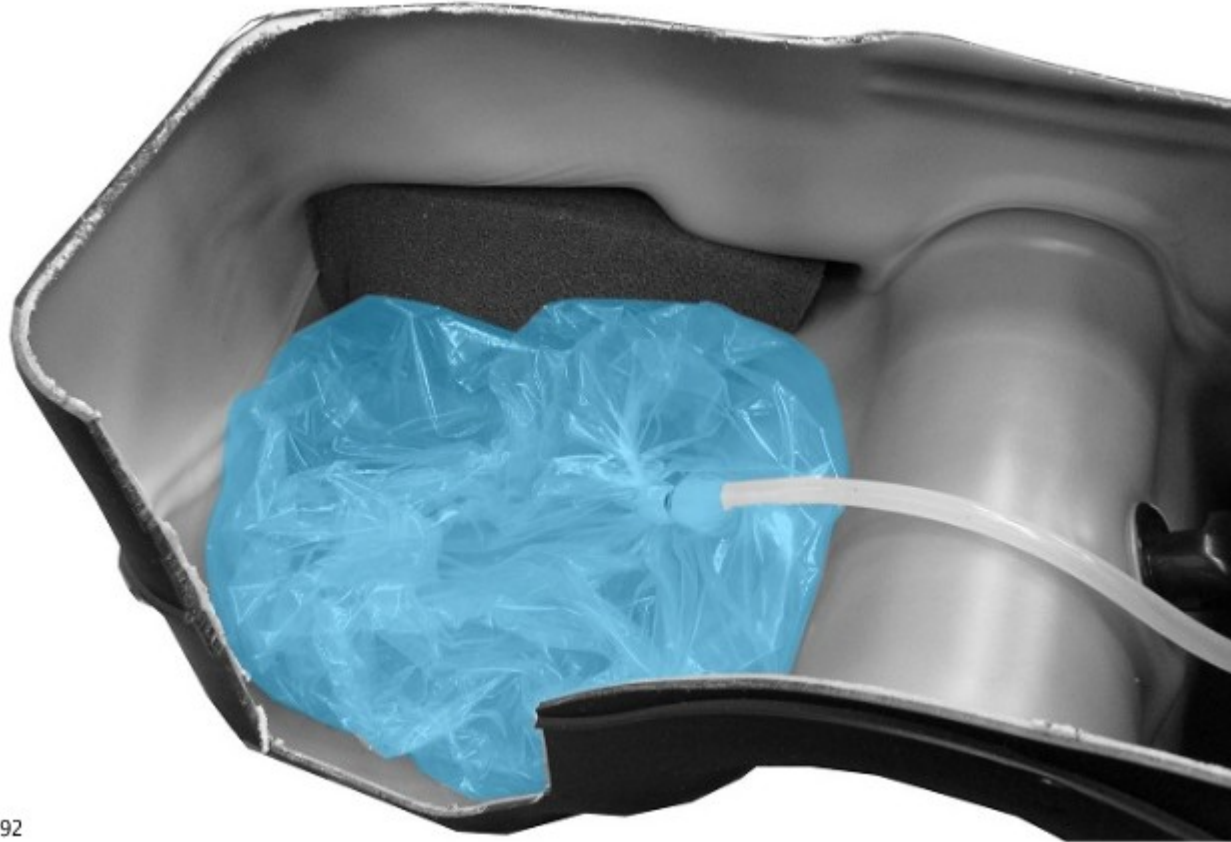


E165474

Inflate the polythene bag with a compressed air line and a tire inflator.



11.



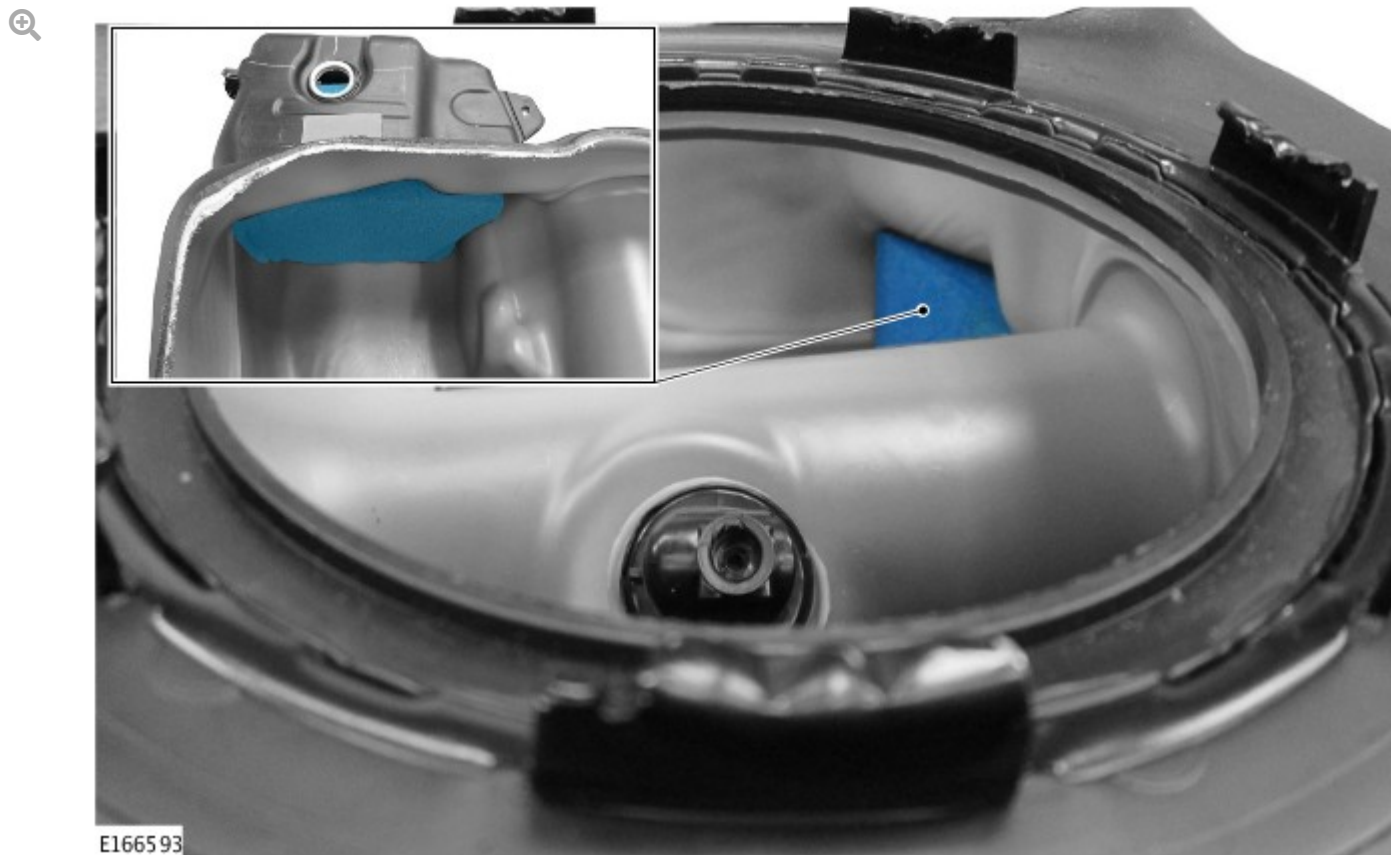
E166592

Inflate the polythene bag until the bag bursts and deflates. Remove the polythene bag and hose. Inspect the positioning of the foam baffle.

12.

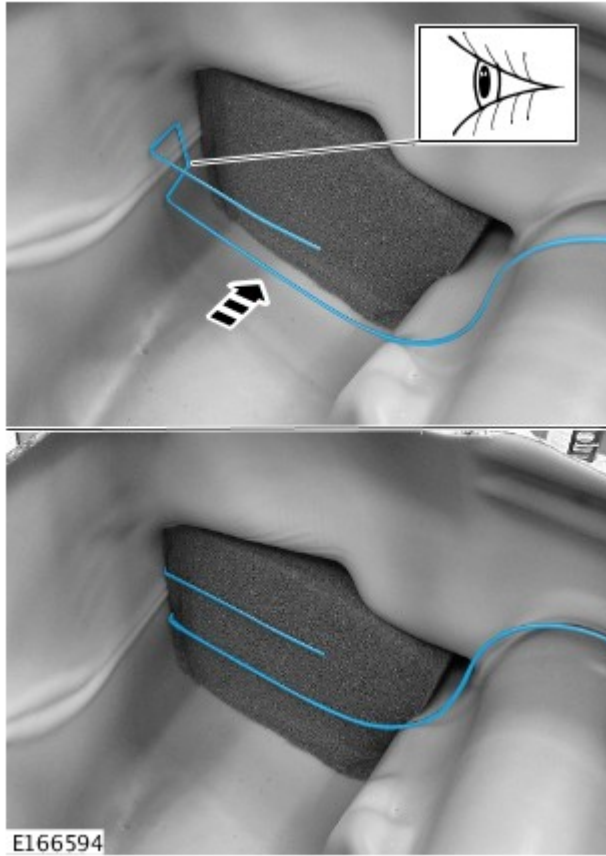
**NOTE:**

A second polythene bag is provided in the fuel tank baffle kit should it be required.



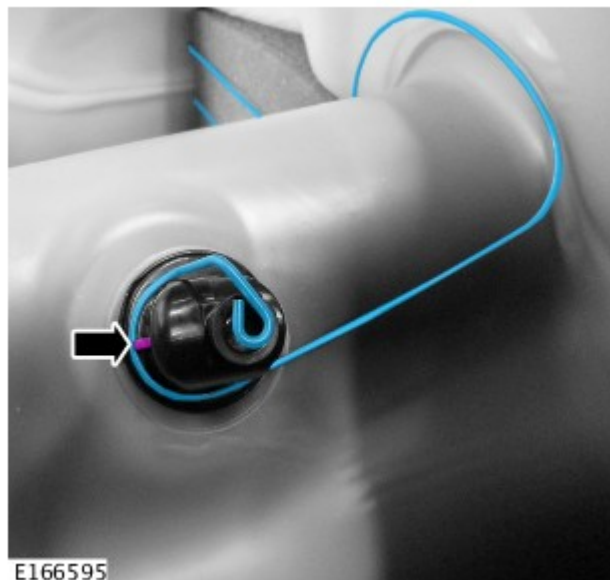
The foam baffle block should now be positioned as shown. If the block is not positioned as shown repeat steps 9 to 13 and inspect again.

13.



From the fuel tank baffle kit, install the retaining frame onto the foam baffle in the fuel tank.

14.



Install the retaining frame onto the tank, as shown in the illustration.

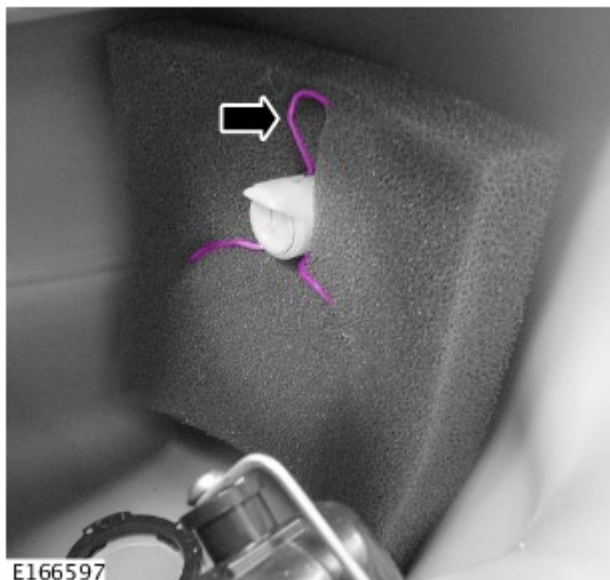
15. Install the passive side fuel level sender unit and carrier arm using the longer screw from the fuel tank baffle kit, (see TOPIx Workshop Manual section 310-01A - Fuel Level Sensor).

16.



Install the small foam baffle in the active side of the fuel tank.

17.



Install the retaining frame onto the smaller foam baffle in the fuel tank.

### 2016 model year vehicles and earlier

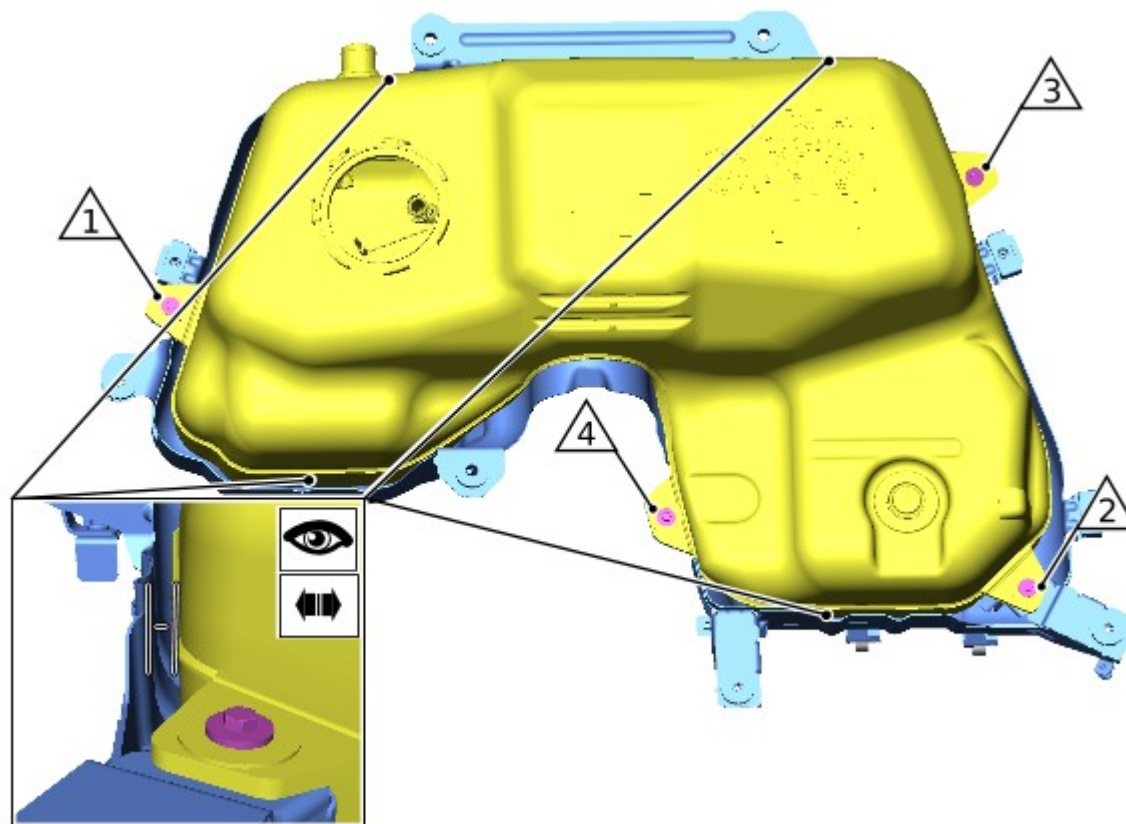
18. Install the fuel tank (see TOPIx Workshop Manual section 310-01: Fuel Tank and Lines - Removal and Installation - Fuel tank).

### 2017 model year vehicles and later

19.

**CAUTION:**

Make sure the fuel tank to fuel tank cradle clearance is maintained when installing the fuel tank cradle.



Install the fuel tank (see TOPIx Workshop Manual section 310-01: Fuel Tank and Lines - Removal and Installation - Fuel tank).

cy1b3djbzE7MjAyNCdwMS0wMlQyMTowNjc0NS41MjZaOzkwLjM3LjcuNzA7