

Tyres

TYRE PRESSURE MONITORING (TPM) SYSTEM

WARNING

The Tyre Pressure Monitoring (TPM) system is not a substitute for manually checking tyre pressures.

The TPM system only provides a low tyre pressure warning and does NOT re-inflate the tyres.

The TPM system cannot register damage to a tyre. Regularly check the condition of your tyres, especially if the vehicle is driven off-road.

Caution: When inflating tyres, care should be taken to avoid bending or damaging the TPM system valves. Always ensure correct alignment of the inflation head to the valve stem.

Note: Non-approved accessories may interfere with the system. If this occurs, **TYRE MONITORING SYSTEM FAULT** is displayed in the message centre.

See **MESSAGE CENTRE MESSAGES, 92**.

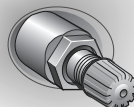
Different types of tyre may affect the performance of the TPM system. Always replace tyres in accordance with recommendations.

See **Tyre pressure and loading label, 239**.

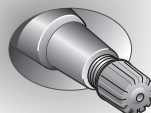
Your vehicle may be equipped with a TPM system which monitors pressure in each tyre, including the full-size spare tyre. Temporary spare tyres are not fitted with sensors and are consequently not monitored.

Note: The TPM system only provides a low tyre pressure warning and does **NOT** re-inflate the tyres.

1



2



LAN0544G

Wheels fitted with a TPM system can be easily visually identified by the external metal lock nut and valve **1**. All Land Rover non-TPM system wheels have a rubber valve fitted **2**.

TPM system operation

The TPM system monitors the pressure of the tyres via sensors located in each wheel and a receiver located within the vehicle. Communication between sensor and receiver is via Radio Frequency (RF) signals.



The tyre pressure warning comprises a yellow warning indicator (telltale) within the instrument pack and an associated message within the message centre.

Each tyre, including the spare (if provided), should be checked regularly, when cold, and inflated to the recommended pressure. When the low tyre pressure warning is indicated, one or more of your tyres is significantly under-inflated.